

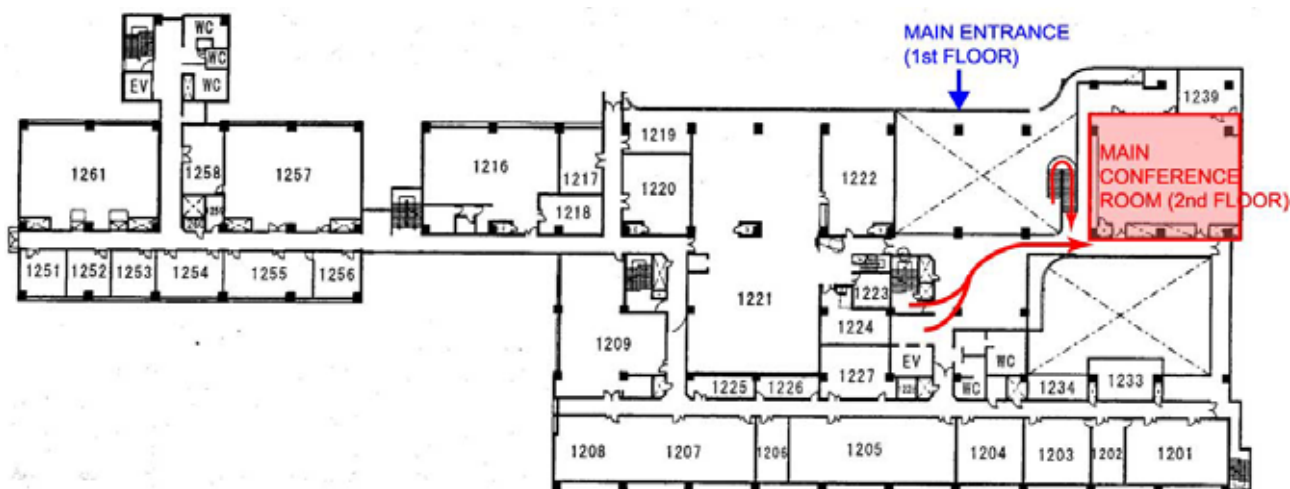
# Mercury Science Meeting Japan #10

(Scientific part of MMO SWG #10, including SOWG)

September 12 (Friday) 2008 13:30 - 16:30

Main Conference Room, ISAS/JAXA

- |       |  |                 |
|-------|--|-----------------|
| 13:30 | 1. Introduction  | Fujimoto [JAXA] |
| 13:40 | Chair: Masaki Fujimoto and Shingo Kameda                                 |                 |
|       | 2. Current status of the SI operation at Perihelion                      | System & NEC    |
|       | 3. Current status of the telemetry situation                             | System & NEC    |
|       | 4. Discussion: What science is doable with the given boundary condition? | All             |
| 16:30 | Adjourn  |                 |



研究・管理棟 2階